

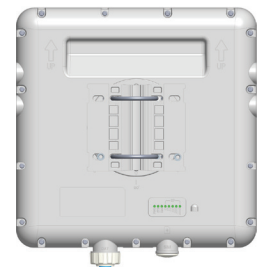
CPE12350

Two Bands, One Solution

The Telrad CPE12350 is the world's first dual-band High gain CPE, fusing the strengths of our next-gen 12300HG and 12000U series devices. It enables wireless service providers to harness both the CBRS and the unlicensed LTE bands via one compact end-customer unit. Owing to its native support for 5 GHz carrier aggregation, the CPE12350 creates an ideal platform for high throughput, incredible resiliency and seamless link continuity under even the most challenging conditions. That makes it easier—and more affordable—than ever for wireless broadband companies of any size to augment their network capacity and keep their customers connected.

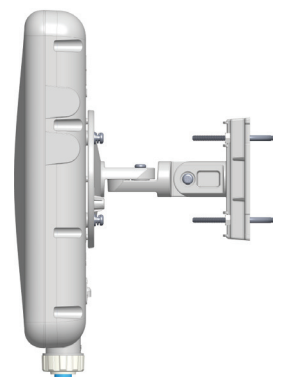
LTE Specifications

LTE Interface	
Standard Compliance	3GPP Release 12
LTE UE Category	Cat 12
Duplex Mode	TDD
Frequency Bands	42, 43, 48 (3.4-3.8GHz) 46 (5.1-5.9GHz)
Channel bandwidth	5 MHz, 10 MHz, 15 MHz, 20 MHz
Carrier Aggregation	2xDL / 1xUL
DL/UL Modulation	B42,43,48 256QAM/64QAM B46 64QAM/64QAM
CBRS (USA Only)	CBSD Cat. B
L1	DL MIMO 4x4
L2 & L3	Multiple APN, PLMN, Cell Selection and Cell Lock
Authentication	USIM SIM function (1.8V and 3.3V SIM and USIM card)
QoS	Non-GBR, GBR



CPE Specifications

CPE12350 Outdoor	
Dimensions (HxWxD)	330x330x72mm 12.9 x 12.9 x 2.8 in
User Interface	LAN 1x100M/1Gb Base USIM
Maximum Transmit Power	23 dbm (3.xGHz) 21 dbm (5.xGHz)
Antenna	17dBi@3.xGHz 20dBi@5.xGHz
Power Source	100~240VAC
Environmental	IP67
Operating Temperature	-40° to 55° C -40° to 131° F



Get More from Wireless. Contact Telrad today to get your LTE deployment started.